

MONTHLY MEMBERSHIP PROGRESS REPORT

LOCATION ICELAND

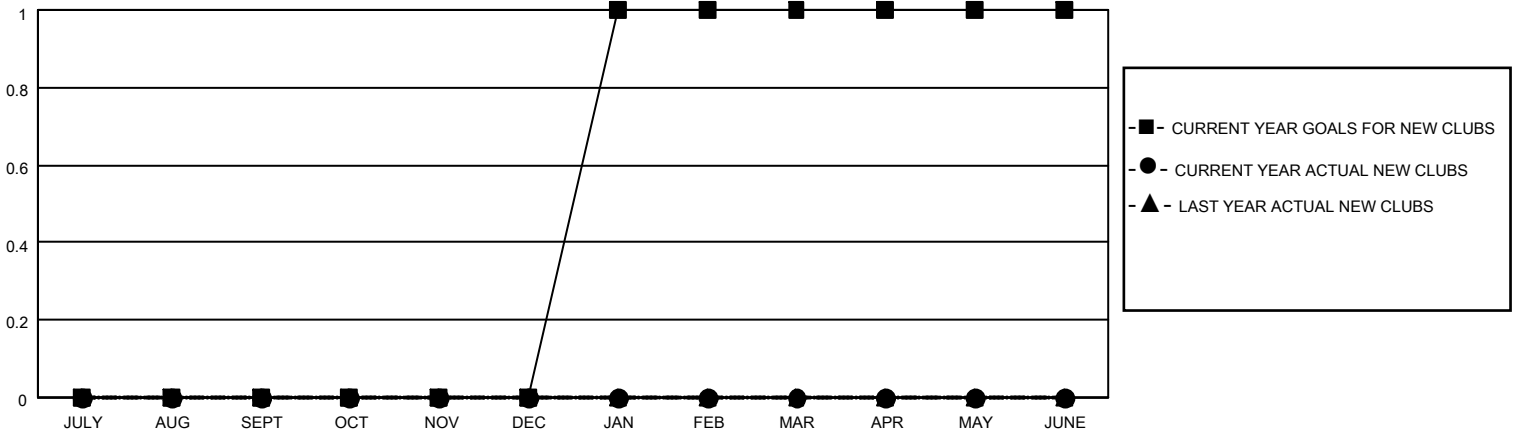
District 109 B

Results as of: 4/30/2022

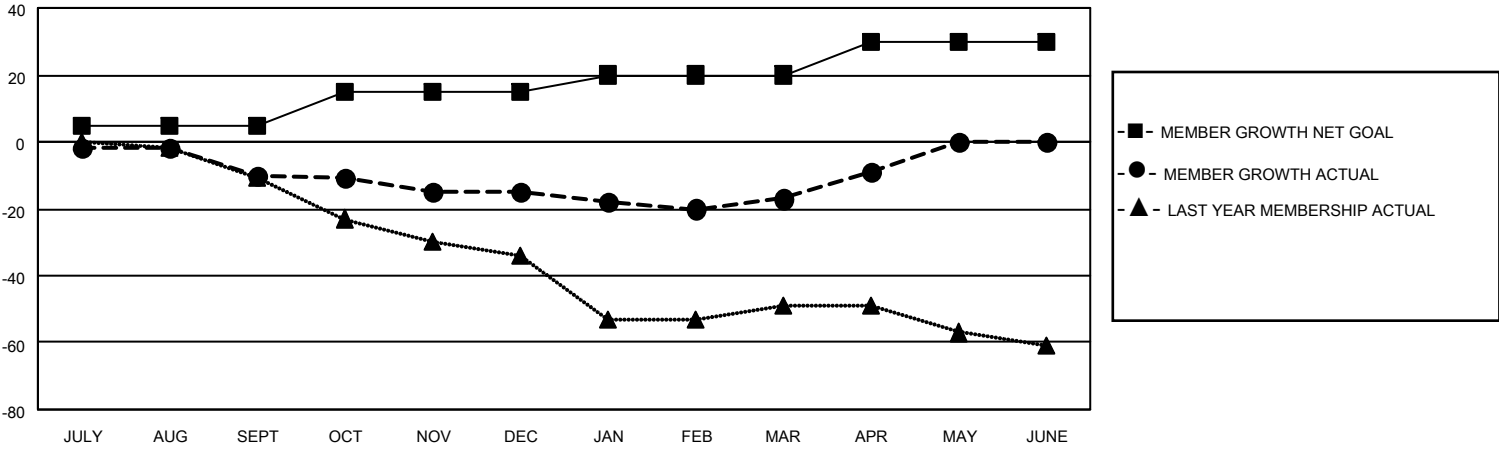
Clubs			
RESULTS FOR 2021-2022			
QUARTER	NEW CLUB GOAL	NEW CLUBS	DROPPED CLUBS
JULY/AUG/SEPT	0	0	0
OCT/NOV/DEC	0	0	0
JAN/FEB/MAR	1	0	0
APR/MAY/JUNE	0	0	0

Members			
RESULTS FOR 2021-2022			
QUARTER	MEMBER GROWTH NET GOAL	MEMBER GROWTH ACTUAL	DROPPED MEMBERS ACTUAL (including transfers)
JULY/AUG/SEPT	5	1	11
OCT/NOV/DEC	10	8	13
JAN/FEB/MAR	5	12	13
APR/MAY/JUNE	10	10	2

GOALS AND ACTUAL NEW CLUBS CUMULATIVE



GOALS AND ACTUAL MEMBERS CUMULATIVE



DROPPED CLUBS: 0

14 CLUBS OF 31 ADDED 1 OR MORE NEW MEMBERS

GENDER DISTRIBUTION

MALE	475 (61.69%)
FEMALE	295 (38.31%)
NON BINARY	0 (0.00%)
PREFER NOT TO ANSWER	0 (0.00%)

DROPPED MEMBERS

[CLICK HERE FOR CUMULATIVE MEMBERSHIP DATA](#)

DECEASED	6
CLUB CANCELLED	0
OTHER	33
TOTAL	39

TOTAL FAMILY UNIT MEMBERS	20
FAMILY MEMBERS PAYING HALF DUES	10